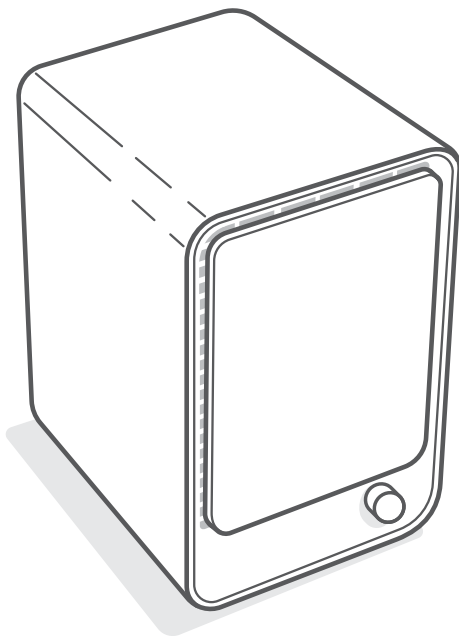




USER MANUAL

## Personal HEPA Air Purifier

Model: LV-H126



### Questions or Concerns?

Please contact us Mon–Fri, 9:00 am–5:00 pm PST/PDT  
at [support@levoit.com](mailto:support@levoit.com) or at **(888) 726-8520**.

# TABLE OF CONTENTS

Package Contents	2
Specifications	2
Safety Information	3
Getting to Know Your Air Purifier	4
About the Filters	7
Getting Started	8
Care & Maintenance	9
• Cleaning the Filters	9
• When Should I Replace the Filters?	9
• Purchasing New Filters	10
• Replacing the Filters	10
• Filter Reminder Wheel	10
Troubleshooting	11
Warranty Information	13
Customer Support	14

# PACKAGE CONTENTS

- 1 x Air Purifier
- 1 x Filter Set (Pre-Installed)
- 2 x Extra Pre-Filters
- 1 x User Manual

# SPECIFICATIONS

<b>Power Supply</b>	AC 120V, 60Hz
<b>Rated Power</b>	35W
<b>Effective Range</b>	161 ft <sup>2</sup> / 15 m <sup>2</sup>
<b>CADR</b>	50 CFM / 85 m <sup>3</sup> /h
<b>Dimensions</b>	12.6 x 9.7 x 7.8 in / 32.0 x 24.6 x 19.8 cm
<b>Weight</b>	5 lb / 2.3 kg
<b>Operating Conditions</b>	<b>Temperature:</b> 14°–104°F / -10°–40°C
<b>Noise Level</b>	≤ 52dB

# SAFETY INFORMATION

To reduce the risk of fire, electric shock, or injury, always follow the instructions and safety guidelines in this manual.

## General Safety

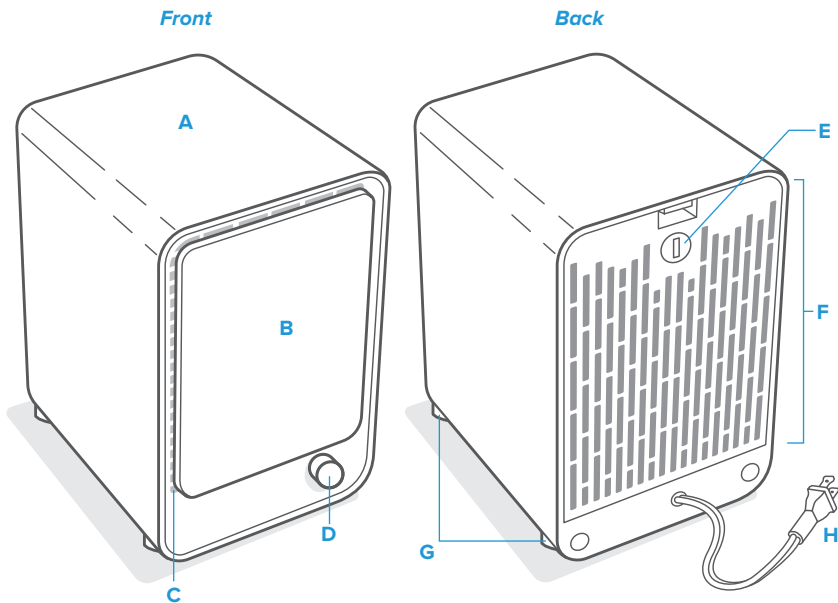
- **Only** use your air purifier as described in this manual.
- **Do not** use your air purifier outdoors.
- Keep your air purifier away from water, and wet or damp areas. **Never** place in water or liquid.
- Keep your air purifier away from heat sources.
- **Do not** use where combustible gases, vapors, metallic dust, aerosol (spray) products, or fumes from industrial oil are present.
- Keep 5 ft / 1.5 m away from where oxygen is being administered.
- Supervise children when they are near the air purifier.
- **Do not** place anything into any opening on the air purifier.
- **Do not** place heavy objects on the air purifier.
- Keep the inside of the air purifier dry. To prevent moisture buildup, avoid placing in rooms with major temperature changes or underneath air conditioners.
- **Always** unplug your air purifier before servicing (such as changing filters).
- **Do not** use your air purifier if it is damaged or not working correctly, or if the cord or plug is damaged. **Do not** try to repair it yourself. Contact **Customer Support** (see page 12).
- **WARNING: Do not** use this air purifier with solid-state speed controls (such as a dimmer switch).
- Not for commercial use. Household use **only**.

## Plug and Cord

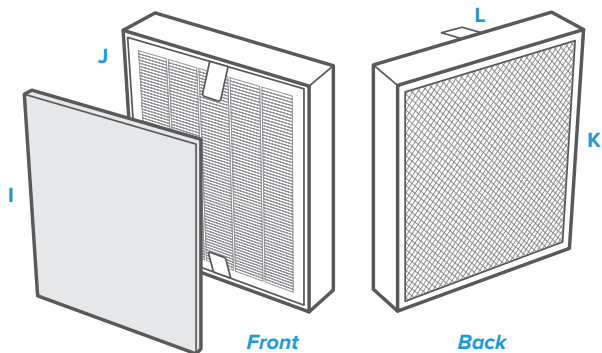
- **Never** place the cord near any heat source.
- Keep the cord out of areas where people walk often. Place the cord where it will not be tripped over.
- **Do not** cover the cord with a rug, carpet, or other covering. **Do not** place the cord under furniture or appliances.
- **Do not** use an extension cord unless the air purifier plug can be fully inserted into the extension cord.
- Your air purifier has a polarized plug (one blade is wider than the other), which fits into a polarized outlet only one way. This is a safety feature to reduce the risk of electric shock. If the plug does not fit, reverse the plug. If it still does not fit, **do not** use the plug in that outlet. **Do not** bypass this safety feature.

# READ AND SAVE THESE INSTRUCTIONS

# GETTING TO KNOW YOUR AIR PURIFIER



- A. Housing
- B. Front Cover
- C. Air Outlet
- D. Control Knob
- E. Filter Reminder Wheel
- F. Rear Cover / Air Inlet
- G. Anti-Skid Pads
- H. Power Cord
- I. Pre-Filter
- J. Personal HEPA Filter
- K. Activated Carbon Filter
- L. Pull Tabs



# ABOUT THE FILTERS

Your Levoit Personal HEPA Air Purifier uses a 3-stage air filtration system to purify air.

## A. Activated Carbon Pre-Filter

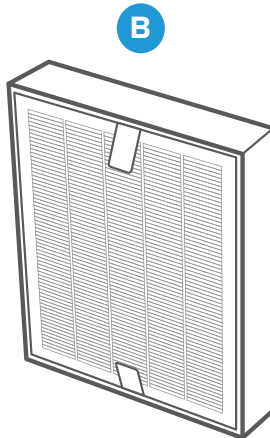
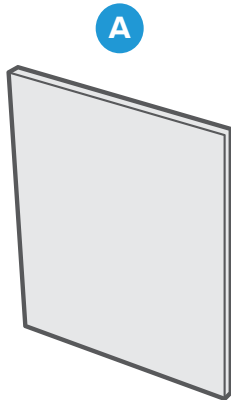
- Captures large particles such as dust, lint, fibers, hair, and pet fur.
- Maximizes the life of the Personal HEPA Filter by protecting it.
- Helps neutralize some unwanted odors, fumes, and airborne compounds.

## B. Personal HEPA Filter

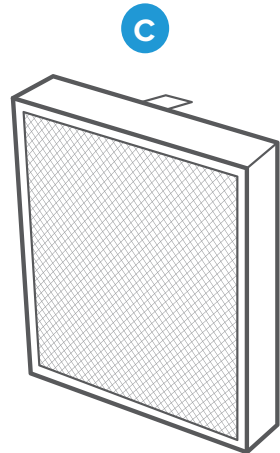
- Removes at least 99.9% of airborne particles 0.3 micrometers ( $\mu\text{m}$ ) in diameter.
- Filters small particles such as mold spores, tiny dust particles, parts of smoke, and allergens such as pollen, dander, and mites.

## C. High-Efficiency Activated Carbon Filter

- Physically adsorbs smoke, odors and fumes.
- Filters compounds such as formaldehyde, benzene, ammonia, hydrogen sulfide, and volatile organic compounds (VOCs).



*Front view of filter*



*Back view of filter*

# GETTING STARTED

1. Remove the rear cover by pressing the top tab down. [Figure 1.1] Remove the rear cover.
2. Remove the filters from their plastic packaging.
3. Place the Pre-Filter on top of the Personal HEPA filter. Make sure the pull tabs are folded over the Pre-Filter.
4. Place the filters back into the air purifier. The pre-filter and pull tabs should be facing out. [Figure 1.2]
5. Replace the rear cover.
  - a. Make sure the side with the filter reminder wheel is facing out.
  - b. Insert the cover's feet into the matching slots in the back of the air purifier. [Figure 1.3]
  - c. Press the rear cover into the housing until the latch clicks.
6. Place your air purifier on a flat, stable surface, such as a table.

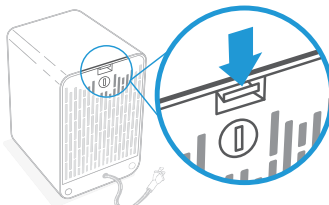


Figure 1.1

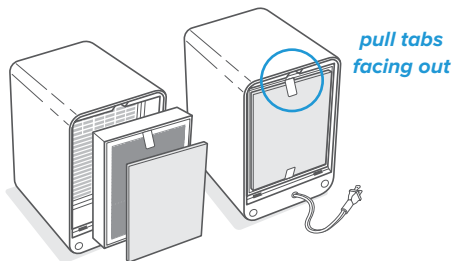


Figure 1.2

# HOW TO USE YOUR AIR PURIFIER

1. Turn on your air purifier by turning the control knob to 1, 2, or 3.

Mode	Speed
1	Low
2	Medium
3	High

2. Turn off your air purifier by turning the control knob to "OFF".

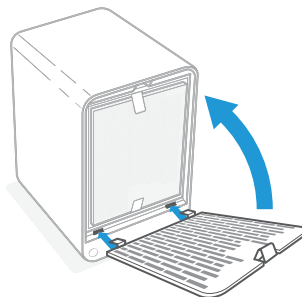


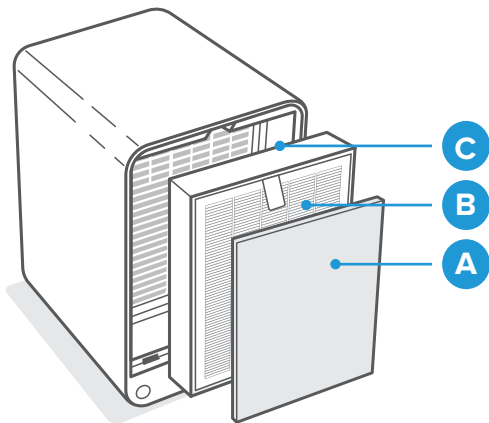
Figure 1.3

# Care & Maintenance

Wipe the outside of the air purifier with a dry cloth. **Do not** clean with water or any other liquid, to avoid risk of electric shock. **Do not** use abrasive cleaners.

## Cleaning the Filters

- A. The Pre-Filter should be cleaned once a month to increase efficiency and extend the life of your filters. Clean the Pre-Filter using a brush to remove hair, dust, and large particles.
- B. **Do not** clean the Personal HEPA Filter. Fine dust or bacteria may be released back into the air if cleaning is attempted, and the filter will be permanently damaged. **Only** clean the Pre-Filter.
- C. The Activated Carbon Filter does not require cleaning.



## When Should I Replace the Filters?

### Activated Carbon Pre-Filter

The Activated Carbon Pre-Filter should be replaced about every 2–3 months. Your air purifier comes with 2 extra pre-filters.

### Personal HEPA Combination Filter

The Personal HEPA Combination Filter should be replaced every 6–8 months.

You may need to change your filters sooner or later depending on how often you use your air purifier. Using your air purifier in an environment with relatively high pollution may mean you will need to change the filters more often.

You may need to replace your filters if you notice:

- Increased noise when the air purifier is on
- Decreased airflow
- Unusual odors
- Visibly clogged filters

# Care & Maintenance (cont.)

## Purchasing New Filters

To maintain the performance of your air purifier, **only** use official Levoit filters. To buy replacement filters, visit Levoit's online store. Go to **levoit.com** for more information.

## Replacing the Filters

1. Turn off and unplug your air purifier.
2. Remove the rear cover (see **Getting Started**, page 6). Remove the old filters.
3. Clean out any dust or hair inside the air purifier using a vacuum hose (or a handheld vacuum). **Do not** use water or other liquids to clean the air purifier.
4. Unwrap the new filters and place them into the air purifier. The Pre-Filter and pull tabs should be facing out. [Figure 3.1]
5. Replace the rear cover.
6. (Optional) Use the filter reminder wheel to track your filter change.

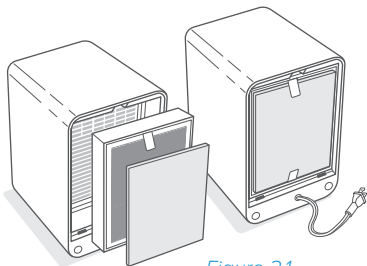
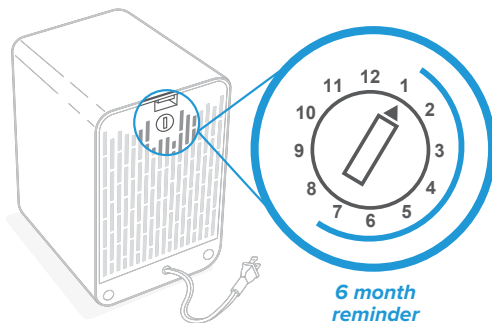


Figure 3.1

## Filter Reminder Wheel



You can use the filter reminder wheel to track when you need to change your filters. Use a tool (such as a small screwdriver or a coin) to turn the wheel. The wheel is marked with the numbers 1–12.

### 2 Ways to Use the Filter Reminder Wheel:

- **Method 1:**  
When you start using the air purifier, turn the wheel to the number of the current month (January is “1”, and December is “12”), so you can track how long the filter is used.
- **Method 2:**  
When you start using the air purifier, turn the wheel 6 months ahead as a reminder. Example: If you replace the filters in February (the 2nd month on the calendar), you can turn the wheel to “8” to remind you to replace your filters again in August (the 8th month).



# TROUBLESHOOTING

Problem	Possible Solution
Air purifier does not turn on, or shuts off unexpectedly.	Make sure the air purifier is plugged in. If so, try plugging into a different outlet.
	Unplug the power cord, and check the cord to see if it is damaged. If so, stop using the air purifier and contact <b>Customer Support</b> (see page 12).
	Air purifier may be malfunctioning. Contact <b>Customer Support</b> (see page 12).
Airflow is reduced significantly.	Make sure the filters are removed from their packaging and properly in place (see page 6).
	Fan speed may be too low. Turn the control knob to the 2 or 3 setting.
	Leave 15 in / 38 cm of clearance on all sides of the air purifier.
	Replace the filters (see page 8).
Air purifier makes an unusual noise while turned on.	Make sure the filters are properly in place with plastic packaging removed (see page 6).
	The air purifier may be damaged, or a foreign object may be inside. Stop using the air purifier and contact <b>Customer Support</b> (see page 12). <b>Do not</b> try to repair the air purifier.

## TROUBLESHOOTING (cont.)

Problem	Possible Solution
Poor air purification quality.	Make sure no objects are blocking the air purifier's inlet or outlet (front and back screens). Leave 15 in / 38 cm of clearance on all sides of the air purifier.
	Make sure the filters are removed from their packaging and properly in place (see page 6).
	Close doors and windows while using the air purifier.
	Make sure the room is smaller than 61 ft <sup>2</sup> / 15 m <sup>2</sup> . The air purifier may not be as effective in larger rooms.
An unusual smell is coming from the air purifier.	Replace the filters (see page 8).

If your problem is not listed, please contact [Customer Support](#) (see page 12).

# WARRANTY INFORMATION

<b>Product</b>	Personal HEPA Air Purifier
<b>Models</b>	LV-H126
<b>Default Warranty Period</b>	1 year
<i>For your own reference, we strongly recommend that you record your order ID and date of purchase.</i>	
<b>Order ID</b>	
<b>Date of Purchase</b>	

## TERMS & POLICY

Arovast Corporation warrants all products to be of the highest quality in material, craftsmanship, and service, effective from the date of purchase to the end of the warranty period.

Arovast Corporation will replace any product found to be defective due to manufacturer flaws based on eligibility. Refunds are available within the first 30 days of purchase. Refunds are only available to the original purchaser of the product. This warranty extends only to personal use and does not extend to any product that has been used for commercial, rental, or any other use in which the product is not intended for. There are no warranties other than the warranties expressly set forth with each product.

This warranty is non-transferrable. Arovast Corporation is not responsible in any way for any damages, losses, or inconveniences caused by equipment failure or by user negligence, abuse, or use noncompliant with the user manual or any additional safety or use warnings included in the product packaging and manual.

### This warranty does not apply to the following:

- Damage due to abuse, accident, alteration, misuse, tampering, or vandalism.
- Improper or inadequate maintenance.
- Damage in return transit.
- Unsupervised use by children under 18 years of age.

Arovast Corporation and its subsidiaries assume no liability for damage caused by the use of the product other than for its intended use or as instructed in the user manual. Some states do not allow this exclusion or limitation of incidental or consequential losses so the foregoing disclaimer may not apply to you. This warranty gives you specific legal rights and you may also have other rights which may vary from state to state.

### **ALL EXPRESSED AND IMPLIED WARRANTIES, INCLUDING THE WARRANTY OF MERCHANTABILITY, ARE LIMITED TO THE PERIOD OF THE LIMITED WARRANTY.**

## Additional 1-Year Warranty

You can extend your 1-year warranty by an additional year. Log onto [www.levoit.com/warranty](http://www.levoit.com/warranty) to register your new product for the extended warranty.

Please fill out all required fields and include your order ID, place of purchase, and purchase date, if applicable.

## Defective Products & Returns

If you discover your product is defective within the specified warranty period, please contact Customer Support via [support@levoit.com](mailto:support@levoit.com) with a copy of your invoice and order ID. **DO NOT** dispose of your product before contacting us. Once Customer Support has approved your request, please return the product with a copy of the invoice or order ID.

# CUSTOMER SUPPORT

If you have any questions or concerns about your new product, please contact our helpful Customer Support Team.

## **Arovast Corporation**

1202 N. Miller St., Suite A  
Anaheim, CA 92806

**Email:** [support@levoit.com](mailto:support@levoit.com)

**Toll-Free:** (888) 726-8520

## **Support Hours**

Mon–Fri, 9:00 am–5:00 pm PST/PDT

*\*Please have your invoice and order ID ready before contacting Customer Support.*





Connect with us @LevoitLifestyle



**lėvoit**

**levoit.com**