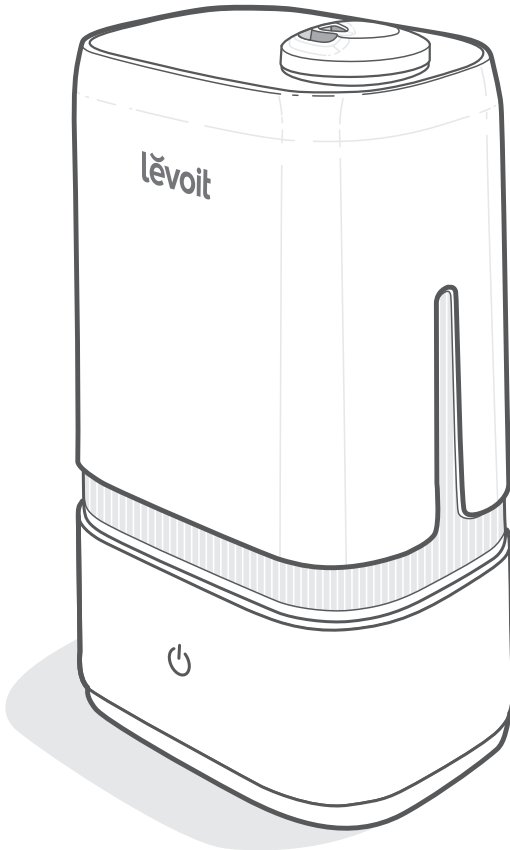


lěvoit

USER MANUAL

Ultrasonic Cool Mist Humidifier

Model: Classic 200



Questions or Concerns?

support.eu@levoit.com

Thank you for purchasing the
CLASSIC 200
ULTRASONIC COOL
MIST HUMIDIFIER
BY LEVOIT.

If you have any questions or concerns, please reach out to us at support.eu@levoit.com. We hope you enjoy your new humidifier!

Share the Levoit Love

Find [@LevoitUK](#) on social media for wellness + style inspiration. We make every space mindful and chic.

Table of Contents

Package Contents	3
Specifications	3
Safety Information	4
Getting to Know Your Humidifier	5
Getting Started	6
Using Your Humidifier	7
Keeping Things Clean	9
Troubleshooting	11
Warranty Information	13
Customer Support	13

Package Contents

1 x	Ultrasonic Humidifier
3 x	Aroma Pads (1 Pre-Installed)
1 x	Cleaning Brush (Stored)
1 x	User Manual
1 x	Quick Start Guide

Specifications

Power Supply	AC 220–240V, 50/60Hz
Rated Power	24W
Water Tank Capacity	4 L / 1.05 gal
Max Run Time	Up to 40 hours Note: <i>The humidifier will be able to run for a longer or shorter time depending on the environmental temperature and humidity.</i>
Noise Level	≤ 30dB
Effective Range	24–35 m ² / 285–376 ft ²
Dimensions	35.4 x 20.2 x 15.2 cm / 14 x 8 x 6 in
Weight	1.6 kg / 3.5 lb

SAFETY INFORMATION

To reduce the risk of fire, electric shock, or other injury, follow all instructions and safety guidelines.

General Safety

- **Only** use the humidifier as described in this manual.
- Place the humidifier and cord so that it will not be knocked over. **Do not** place near large pieces of furniture or in high-traffic areas.
- When not in use, turn the humidifier off and disconnect from power by removing the plug from the outlet.
- **Do not** use the humidifier in wet environments.
- Keep the humidifier out of reach from children.
- **Do not** open the base or remove the water level sensor for self-servicing.
- **Always** unplug your humidifier from the power outlet before cleaning your humidifier or detaching the water tank from the humidifier base.
- **Always** make sure to place the humidifier on a flat, level surface before operation.
- **Only** fill the water tank with clean water. **Never** fill the water tank with any other liquids.
- **Do not** place the humidifier near sources of heat, such as stovetops, ovens, or radiators.
- **Do not** place the humidifier directly on floors, carpets, or rugs.
- **Do not** use other items as replacement parts for this product.
- **Do not** cover the nozzles while the humidifier is on. Doing so may damage the humidifier.
- Remove the water tank from the base before moving the humidifier.
- **Do not** immerse the humidifier base, power cord, or plug in water.
- **Do not** handle the power cord or plug with wet hands. Keep the plug and power cord away from liquids.
- If the humidifier is damaged or is not functioning properly, stop using it and contact **Customer Support** immediately (see page 13).
- Not for commercial use. Household use **only**.

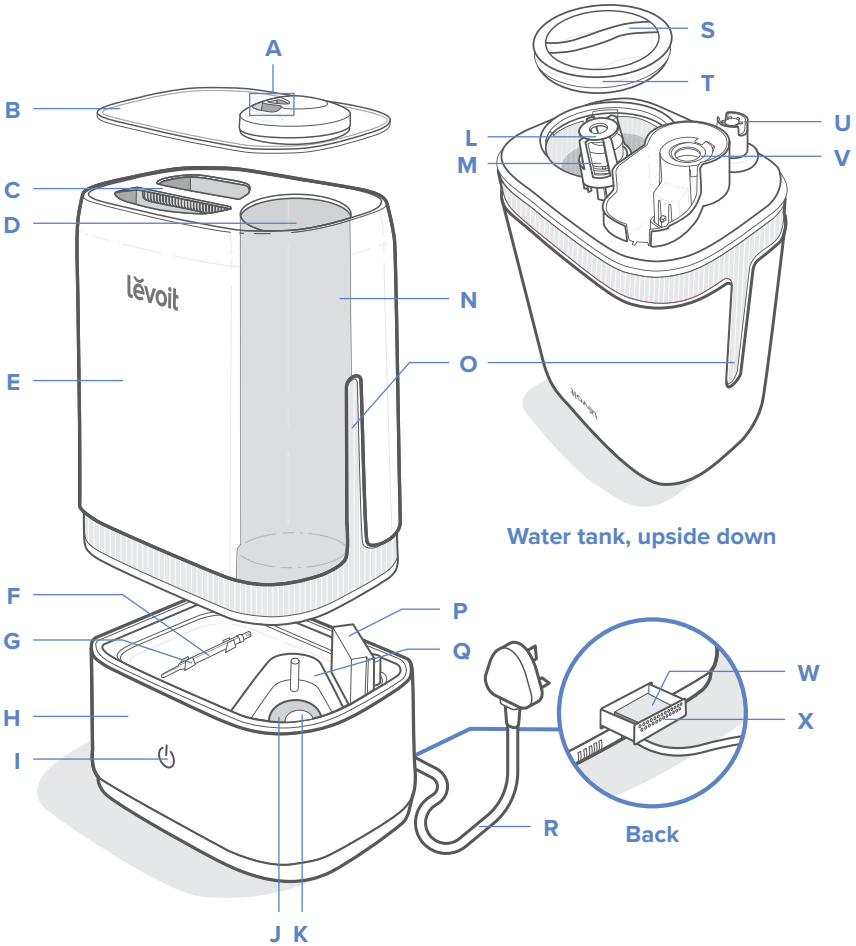
Caution: Risk of Leaks and Electric Shock

- **Do not** add essential oils, supplemental water treatment liquids, or water filters into the water tank or base. This will damage the humidifier and cause leaks. **Only** add essential oils to the aroma pad.

**READ AND
SAVE THESE
INSTRUCTIONS**

GETTING TO KNOW YOUR HUMIDIFIER

- | | | |
|----------------------------------|------------------------------|---------------------------------|
| A. Nozzles | I. Control Button | Q. Inner Chamber |
| B. Nozzle Cap | J. Insulation Ring | R. Power Cord |
| C. Water Tank Handle | K. Transducer | S. Water Tank Cap |
| D. Mist Outlet | L. Float Housing | T. Silicone Sealing Ring |
| E. Water Tank | M. Float | U. Water Valve |
| F. Cleaning Brush | N. Mist Tube | V. Noise Silencer |
| G. Cleaning Brush Storage | O. Water Tank Windows | W. Aroma Pad |
| H. Base | P. Air Outlet | X. Aroma Box |



Water tank, upside down

Back

GETTING STARTED

1. Remove the nozzle cap from the water tank. Use the handle to lift the water tank from the base. [Figure 1.1]
2. Flip the water tank over and twist open the water tank cap. [Figure 1.2]
3. Fill the water tank with at least 475 mL / 2 cups of cold or room temperature water. The maximum capacity is 4 L / 1.05 gal.

Note:

- We recommend using purified or distilled water to fill the tank.
- **Do not** fill the water tank with hot water.
- **Only** add water through the water tank cap. **Do not** add water through the nozzles, mist tube, or into the inner chamber.
- **Do not** lift the entire humidifier by the water tank handle.
- **Do not** add essential oils to the water tank or base. **Only** add essential oils onto the aroma pad. [Figure 1.3]
- **Do not** let water inside the air outlet.
- If water gets inside the air outlet, unplug the humidifier and pour out all water. Let the humidifier rest in a well-ventilated area for 24 hours. **Do not** use again until completely dry.

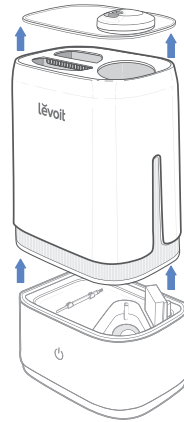


Figure 1.1

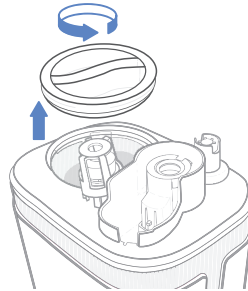


Figure 1.2

4. Replace the water tank cap and carefully place the water tank back onto the base. Align the water tank cap with the inner chamber.
5. Place the nozzle cap back on top of the water tank.

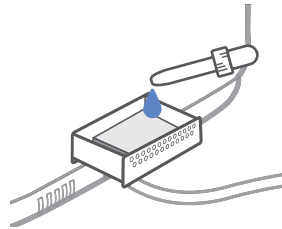


Figure 1.3



USING YOUR HUMIDIFIER

General Operation

1. Place the humidifier on a level, elevated, and water-resistant surface, such as a table or nightstand. Make sure the room is well-ventilated.

Note:

- Position the humidifier at least 30 cm / 12 in away from walls and appliances to prevent them from getting wet. [Figure 2.1]
- Do not place the humidifier directly on floors, carpets, or rugs.
- Direct the nozzles away from any furniture to prevent your furniture from getting wet.

2. Plug in the humidifier.  will light up red for 2 seconds then turn off.
3. Tap  to turn your humidifier on. Tap repeatedly to change the mist setting.

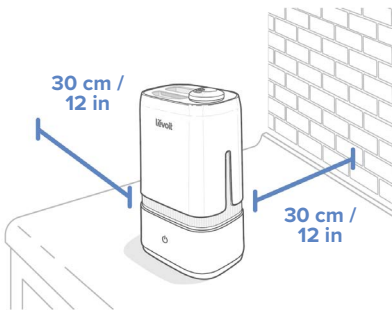




Figure 2.1

Control Button Colour

Button Colour	Function
Blue	Low mist setting is selected
Orange	Medium mist setting is selected
Purple	High mist setting is selected
Blinking Red	No water in tank or tank not on base
No Colour	Humidifier is off
	Humidifier has been misting for more than 30 seconds

Note:

- Low mist is the default setting when the humidifier is first turned on.
- The power light will automatically turn off after 30 seconds while the humidifier is on. To check the current mist setting, tap  once. Tap again to change the mist setting.
- Excessive humidity can cause health issues and mould growth. If the relative humidity in your room is over 60%, use the low mist setting or turn off the humidifier.
- If there is no water in the tank or the tank is removed, the transducer will turn off, the fan will turn off after 5 seconds, and  will blink red before turning off.

USING YOUR HUMIDIFIER (CONT.)

Using the Aroma Box

Your humidifier can be used as an aroma diffuser.

1. Turn off the humidifier.
2. Push the aroma box at the back of the base and pull it out. [Figure 3.1]
3. Put 2–3 drops of essential oil on the aroma pad.
4. Replace the aroma box into the humidifier. Fill the water tank with water and place it back on the base (see **Getting Started**, page 6).
5. Plug in and turn on the humidifier.

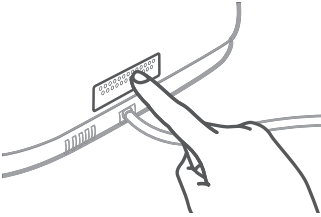


Figure 3.1

Preventing Water Leaks

The water tank on your humidifier may leak if not placed properly.

- Make sure the silicone sealing ring around the water tank cap is secured at all times.
- Twist and secure the cap tightly onto the water tank.

Note: A small gap between the cap and the tank is normal.

- Wipe off any excess water on the top and bottom of the base.
- Do not shake the humidifier.
- Make sure to place the humidifier on a flat, level surface.

KEEPING THINGS CLEAN

Caution:

- **Always** make sure the humidifier is unplugged before cleaning.
- The water in the inner chamber near the transducer may still be warm after turning off the humidifier. Use caution when pouring out the water.
- **Do not** use liquid detergents.
- We recommend using purified or distilled water instead of tap water to prevent hard water buildup.
- **Do not** submerge the base in water.

General Cleaning

You should clean your humidifier every 3 days. Change the water every day or every other day to avoid bacteria growth.

1. Unplug the humidifier.
2. Remove the nozzle cap from the water tank and rinse under clean, running water. Set it aside to air dry.
3. Remove the water tank from the base and pour out any water from the inner chamber. Fill the tank with 710 mL / 3 cups of distilled white vinegar. Replace the cap and gently shake to coat all sides of the water tank. Allow it to sit for at least 1 hour.

Note: **Do not** allow water inside or around the air outlet to prevent damage to the humidifier. [Figure 4.1]

4. Add 238 mL / 1 cup of distilled white vinegar to the inner chamber and soak for 1 hour.
5. Use the included cleaning brush to remove any scale buildup inside the water tank or inner chamber. [Figure 4.1]

6. Pour out the vinegar from the water tank and the inner chamber and thoroughly rinse with warm water.

Note: **Do not** submerge the base in water.

7. Dry all parts with a clean, dry cloth. Make sure all parts of the humidifier are completely dry before reassembling or storing.
8. **Do not** use the humidifier immediately after disinfecting. This may be a health hazard.

Note: A 3% hydrogen peroxide solution may also be used instead of vinegar to disinfect the humidifier. **Do not** mix hydrogen peroxide and vinegar.

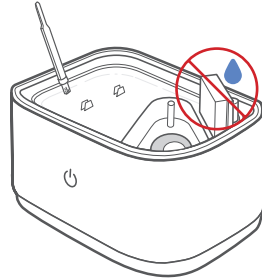


Figure 4.1

KEEPING THINGS CLEAN (CONT.)

Cleaning the Aroma Pad

1. Press the aroma box to release it from the base, and pull it out.
2. Remove the aroma pad and rinse under warm, running water.
3. Dry with a clean cloth and place it back into the aroma box.

Note: *Do not* pour liquid cleaners or detergents into the aroma pad or box.

Cleaning the Noise Silencer

1. Press the release tab and gently pull away from the humidifier. [Figure 5.1]
2. Rinse under clean, running water.
3. Dry with a clean, dry cloth before replacing it.

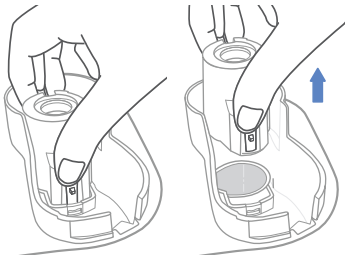


Figure 5.1

Deep Cleaning the Humidifier

Deep clean the water tank every 2 weeks and before and after storing the humidifier for a long period of time. You should also disinfect if there is any mould buildup inside the water tank or inner chamber.

Note: *Only* use vinegar and water to deep clean your humidifier.

1. Fill the water tank with 238 mL / 1 cup of vinegar along with 3.8 L / 1 gal of water.
2. Place the humidifier outdoors and allow it to run for 1 hour.
3. Pour out the mixture and refill with water. Then, run the humidifier for another hour outdoors.
4. Rinse the water tank and inner chamber thoroughly under clean, running water.

Note: *Do not* submerge the base in water.

5. If storing, allow the water tank and base to completely air dry before reassembling.

TROUBLESHOOTING

Problem	Possible Solution
No mist comes out of the nozzles.	Plug in the humidifier and turn it on.
	Add at least 475 mL / 2 cups of purified or distilled water to the water tank.
	Clean the humidifier (see Keeping Things Clean , page 9).
	Water may be in the air outlet. Take the water tank off of the base and allow the outlet to fully air dry before using again.
Only a small amount of mist comes out of the nozzles.	Clean the humidifier, especially the nozzles, air outlet, and transducer (see Keeping Things Clean , page 9).
Humidifier runs out of water too quickly.	The humidifier uses up water based on the environmental temperature and humidity. If your environment is cold and/or dry, the humidifier will run out of water faster.
Humidifier produces an unusual smell.	If the humidifier is new, remove the water cap, and place the water tank in a cool, dry place for 12 hours.
	If essential oils were diffused on the aroma pad, rinse the pad under clean water, and allow it to dry.
	Clean the humidifier (see Keeping Things Clean , page 9).
Humidifier makes a loud or unusual noise.	Make sure the water tank is properly in place (see Getting Started , page 6).
	Place humidifier on a flat, level surface.
	Add at least 475 mL / 2 cups of purified or distilled water into the water tank.
	The humidifier may be malfunctioning. Stop using the humidifier and contact Customer Support (see page 14).
Mist comes out from the base.	Make sure the water tank is properly in place (see Getting Started , page 6).
White dust appears around the humidifier.	We recommend using purified or distilled water to fill the humidifier. Avoid using water with high mineral content.
	Clean the humidifier (see Keeping Things Clean , page 9).

TROUBLESHOOTING (CONT.)

Problem	Possible Solution
<p>Water visibly leaks from the humidifier.</p>	<p>Stop using the humidifier and see Preventing Water Leaks (page 8) before using again. If the humidifier continues leaking, contact Customer Support (see page 14).</p>
	<p>Make sure the silicone sealing ring around the water tank cap is secure.</p>
<p>A puddle of water forms around the humidifier.</p>	<p>Run the humidifier on a lower mist setting.</p>
	<p>Open a window to ensure proper airflow for your humidifier, or move the humidifier to a more well-ventilated room.</p>
	<p>Make sure the water tank is properly in place (see Getting Started, page 6).</p>
	<p>Make sure the silicone sealing ring around the water tank cap is secure.</p>
	<p>When replacing the water tank, wipe off excess water from the water tank and base.</p>
	<p>Stop using the humidifier and see Preventing Water Leaks (page 8) before using again. If the humidifier still leaks, contact Customer Support (see page 13).</p>
<p>Mould grows inside the humidifier.</p>	<p>Clean the water tank and inner chamber regularly (see Keeping Things Clean, page 9).</p>

If your problem is not listed, please contact [Customer Support](#) (see page 13).

WARRANTY INFORMATION

Terms & Policy

Arovast Corporation warrants all products to be of the highest quality in material, craftsmanship and service for 2 years, effective from the date of purchase. Warranty lengths may vary between product categories. Should you encounter any issues or have any questions regarding your new product, feel free to contact our helpful Customer Support Team.

CUSTOMER SUPPORT

Arovast Corporation

1202 N. Miller St., Suite A
Anaheim, CA 92806
USA

Email: support.eu@levoit.com

*Please have your order invoice and order ID ready before contacting Customer Support.

NOTES

Connect with us @LevoitUK



lěvoit

levoit.com