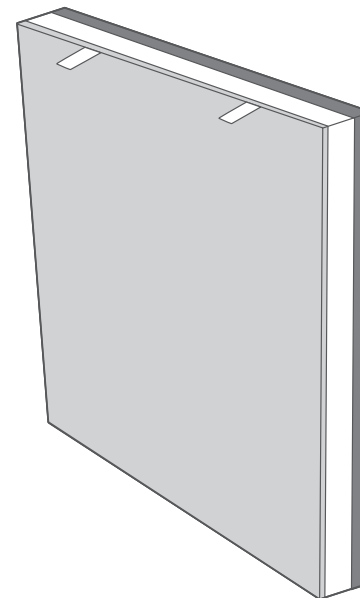


True HEPA Replacement Filter

Model: Vital 100-RF

Thank you for purchasing the Levoit Vital 100-RF True HEPA Replacement Filter.
This air filter is meant to be used with the Levoit Vital 100 Air Purifier.
If you have any questions or concerns, please reach out to us at support@levoit.com.



levoit

levoit.com

SAFETY INFORMATION

Follow all safety guidelines. Read all instructions before using.

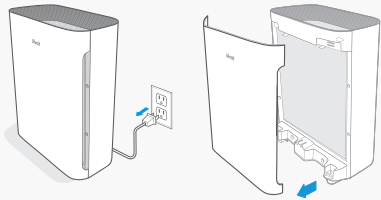
- **Do not** allow children to play with the plastic packaging. Immediately discard the plastic after unwrapping the filter.
- A damaged filter may not properly filter air. Contact Customer Support immediately if you have received a damaged air filter.

Note:

- *The air filter should be replaced every 6–8 months.*
- **Do not** clean the filter with water or other liquids.

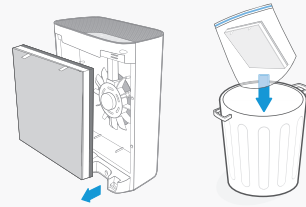
REPLACING THE AIR FILTER

1.



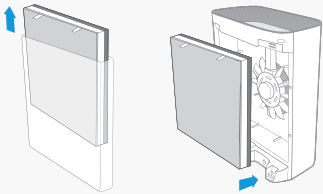
Unplug the air purifier and remove the filter cover.

2.



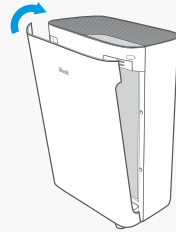
Remove and properly dispose of the old air filter.

3.



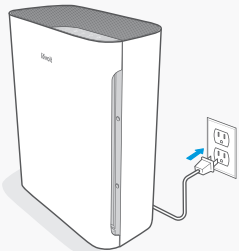
Unwrap the filter and place into the air purifier with pull tabs facing out.

4.



Replace the filter cover.


5.




Plug in the air purifier and turn it on.

6.



Press and hold  for 3 seconds to reset it.

Note: If  is off, press and hold for 3 seconds to turn it on, then press and hold again for 3 seconds to reset it.

PURCHASING ADDITIONAL AIR FILTERS

To maintain the performance of your air purifier, **only** use official Levoit filters. To buy replacement filters, visit Levoit's online store. Go to **levoit.com** for more information.

Customer Support

Arovast Corporation
1202 N. Miller St., Suite A
Anaheim, CA 92806

Email: support@levoit.com

Toll-Free: (888) 726-8520

Support Hours

Mon–Fri, 9:00 am–5:00 pm PST/PDT

*Please have your order invoice and order ID ready before contacting Customer Support.